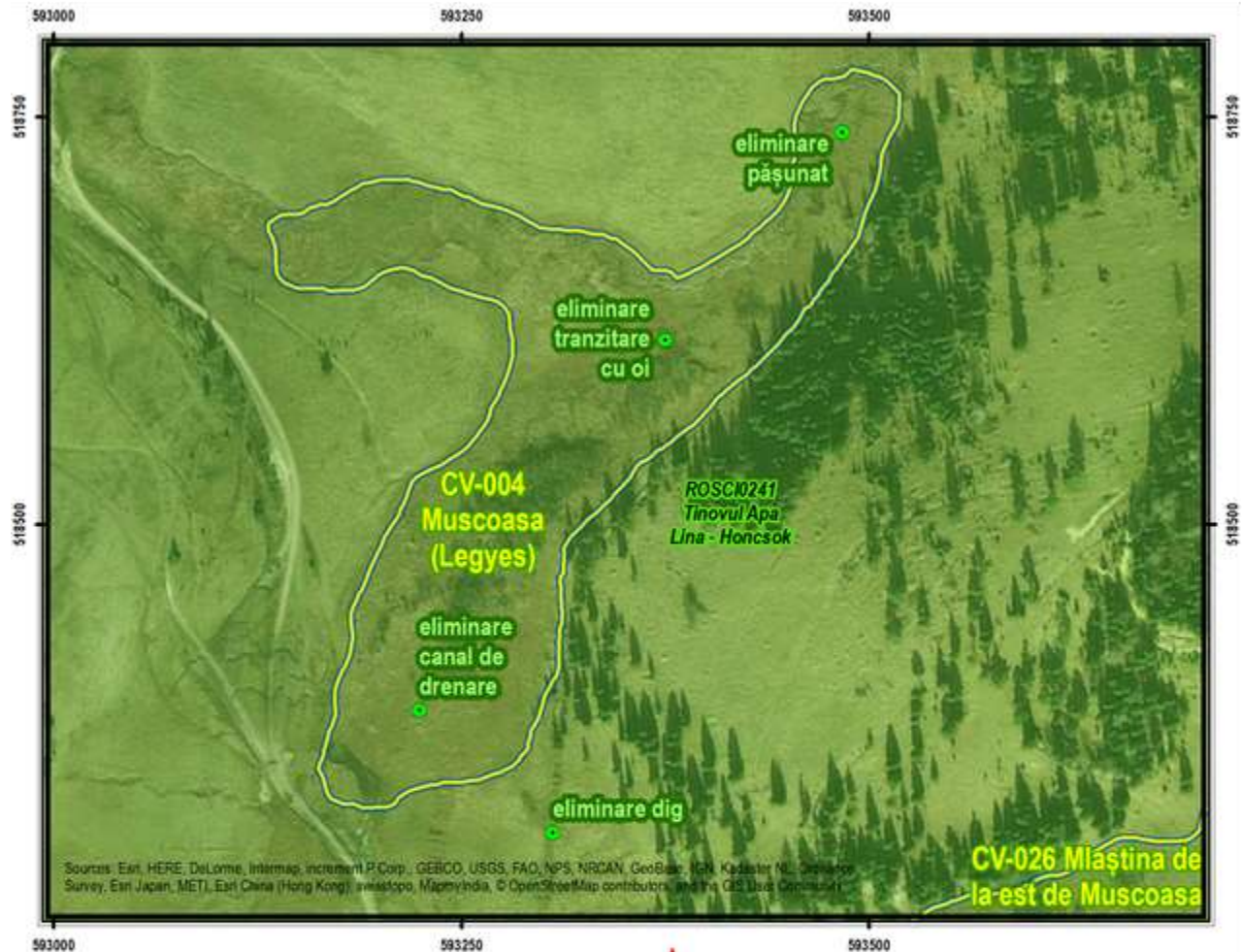


Annex 9 Restoration schemes Center Region

Restoration scheme no. 1

CV-004 – Muscoasa



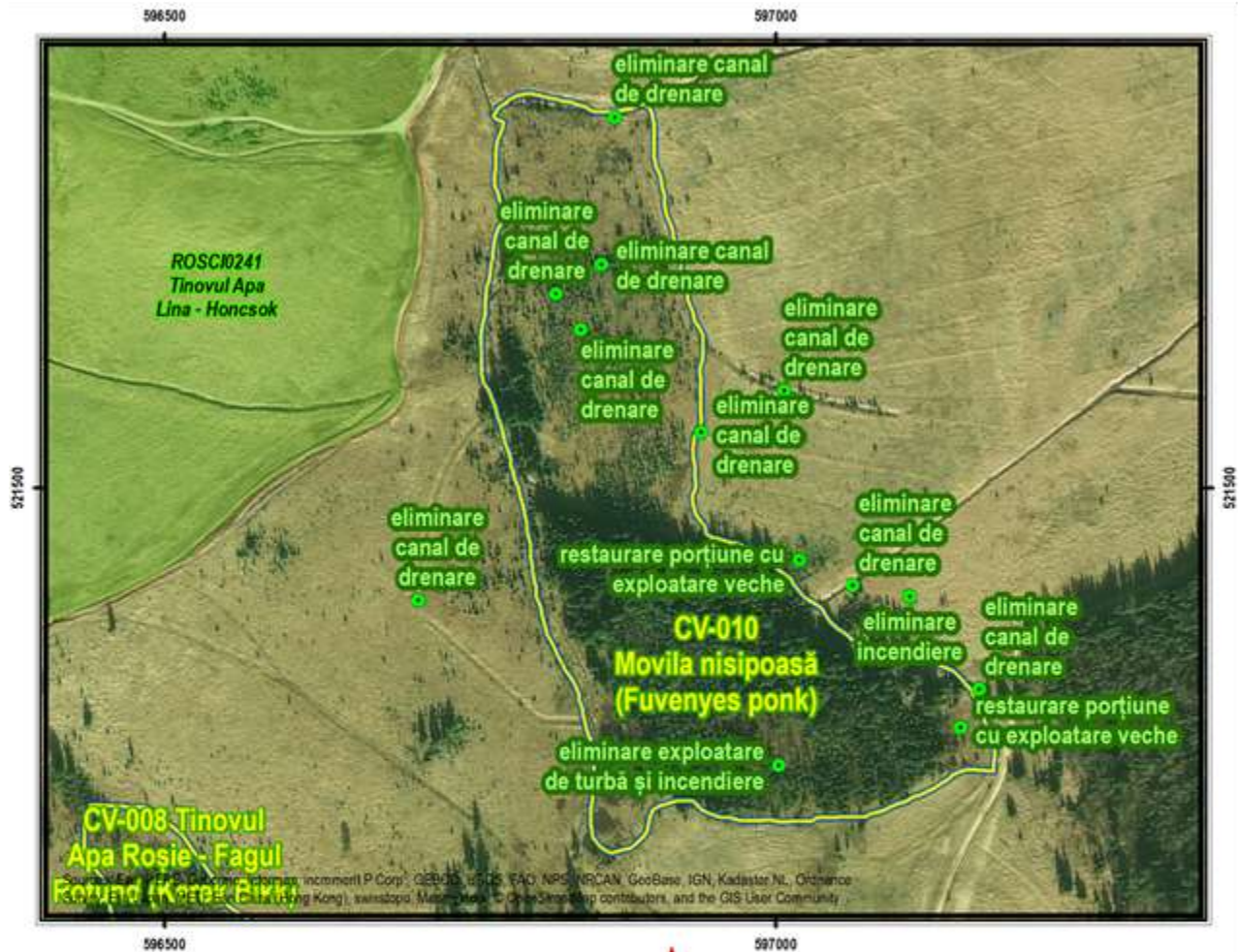
Restoration scheme no. 3

CV-008 – Tinovul Apa Roșie – Fagul Rotund



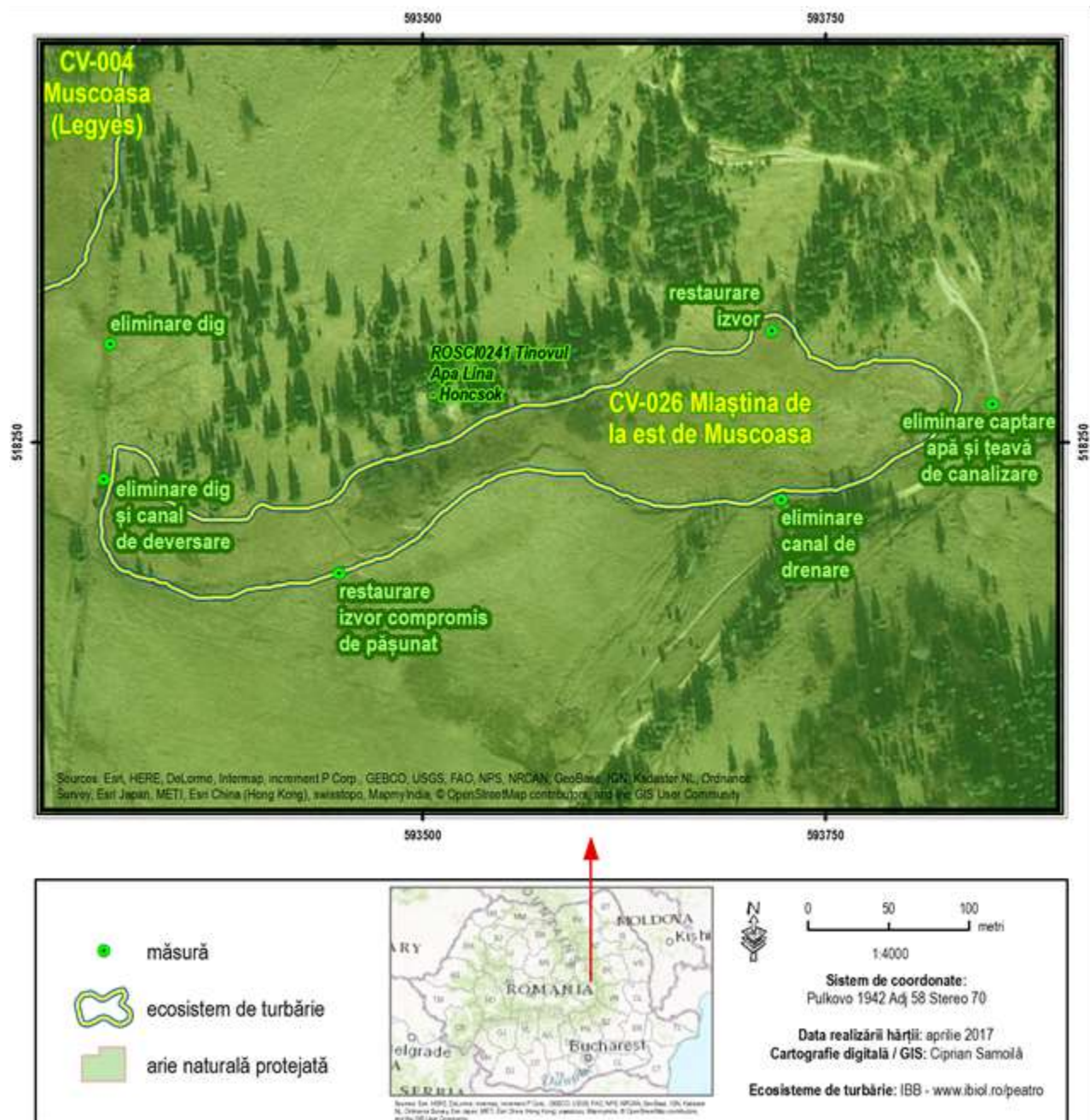
Restoration scheme no. 4

CV-010 – Movila Nisipoasă



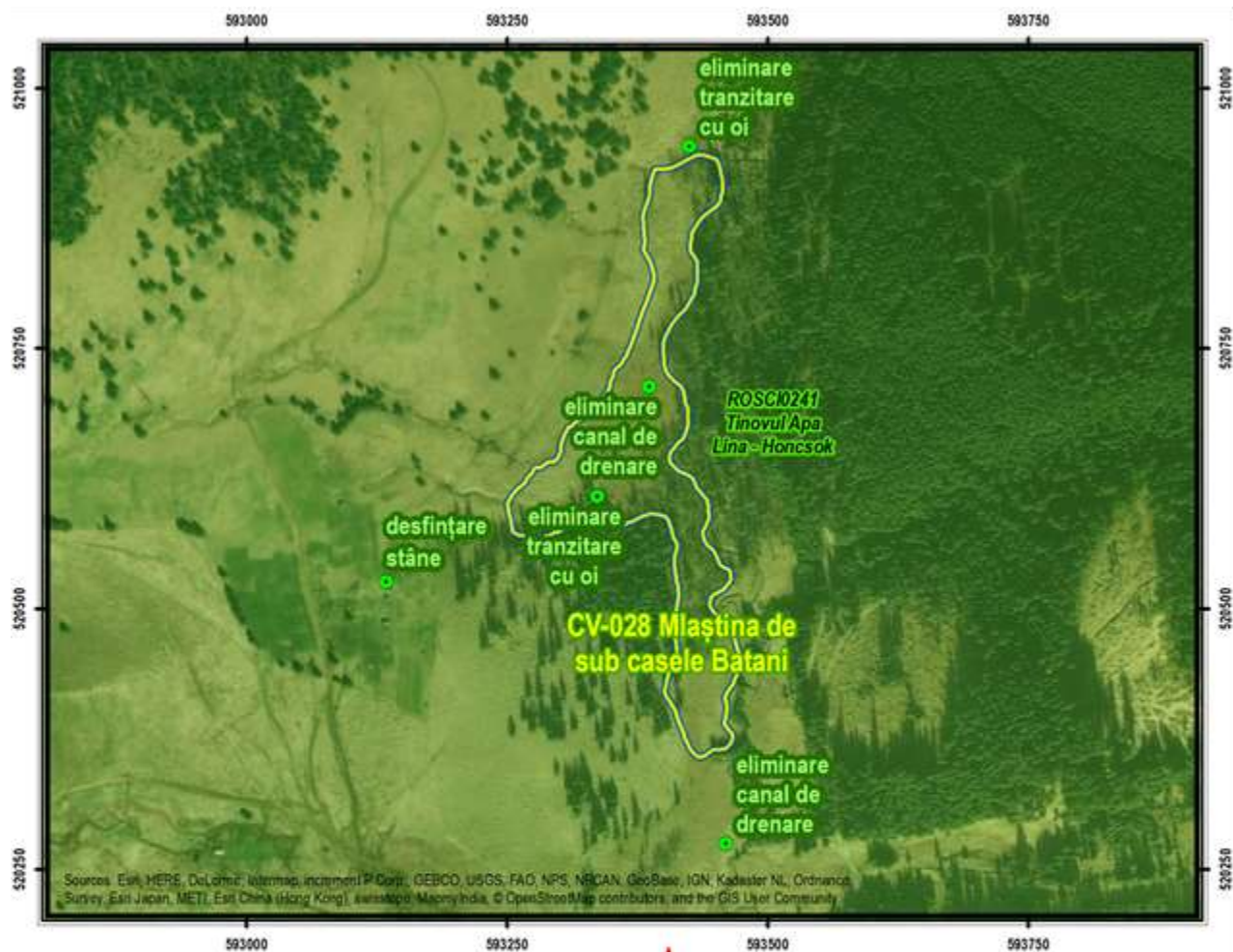
Restoration scheme no. 5

CV-026 – Mlaștina de la est de Muscoasa



Restoration scheme no. 6

CV-028 – Mlaștina de sub casele Batani



Restoration scheme no. 7

HR-031 – Mlaștina Luc, Ruc – Fântâna Brazilor

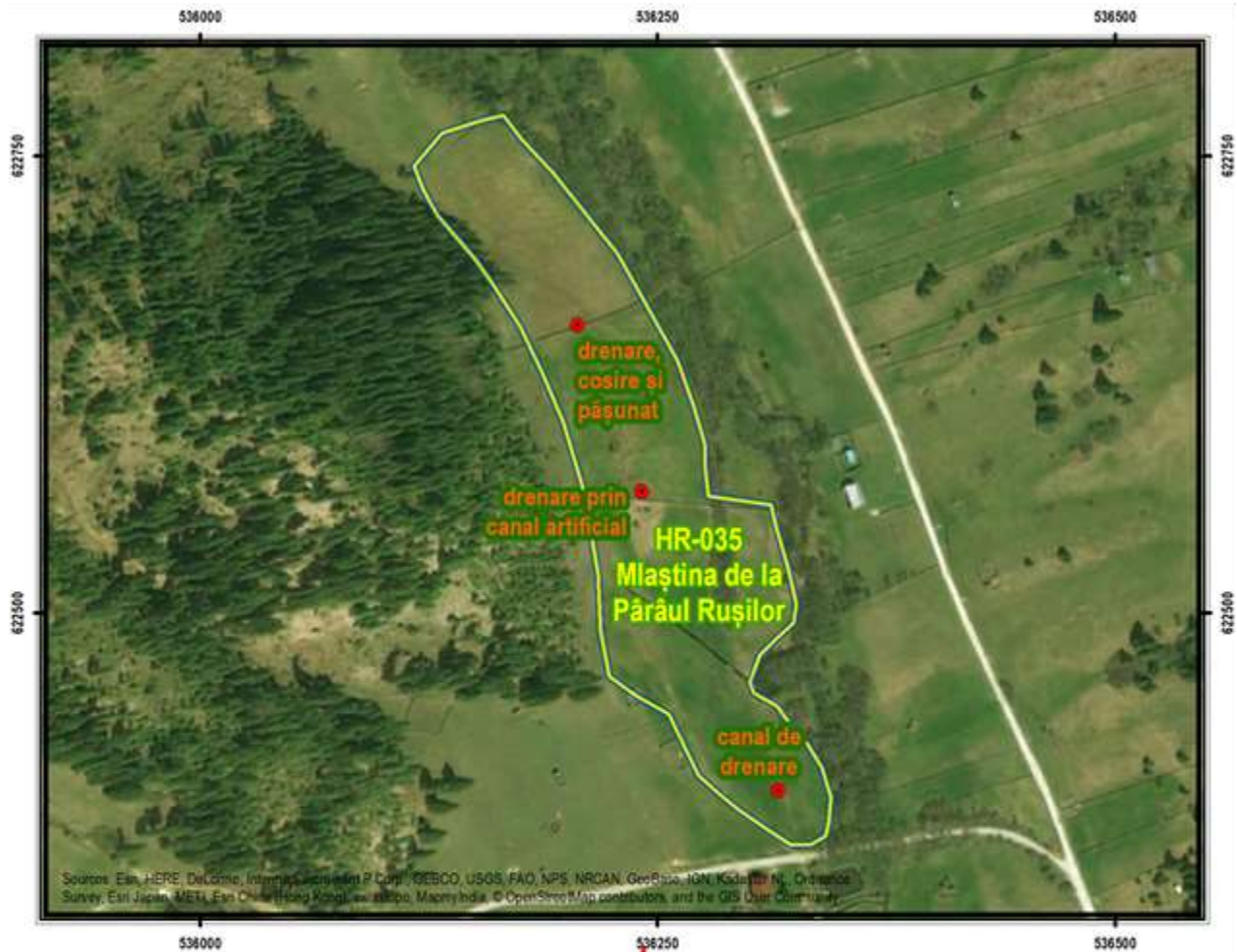
HR-043 – Mlaștina Podul de Hârtie

HR-044 – Mlaștina Ramura Corundului



Restoration scheme no. 8

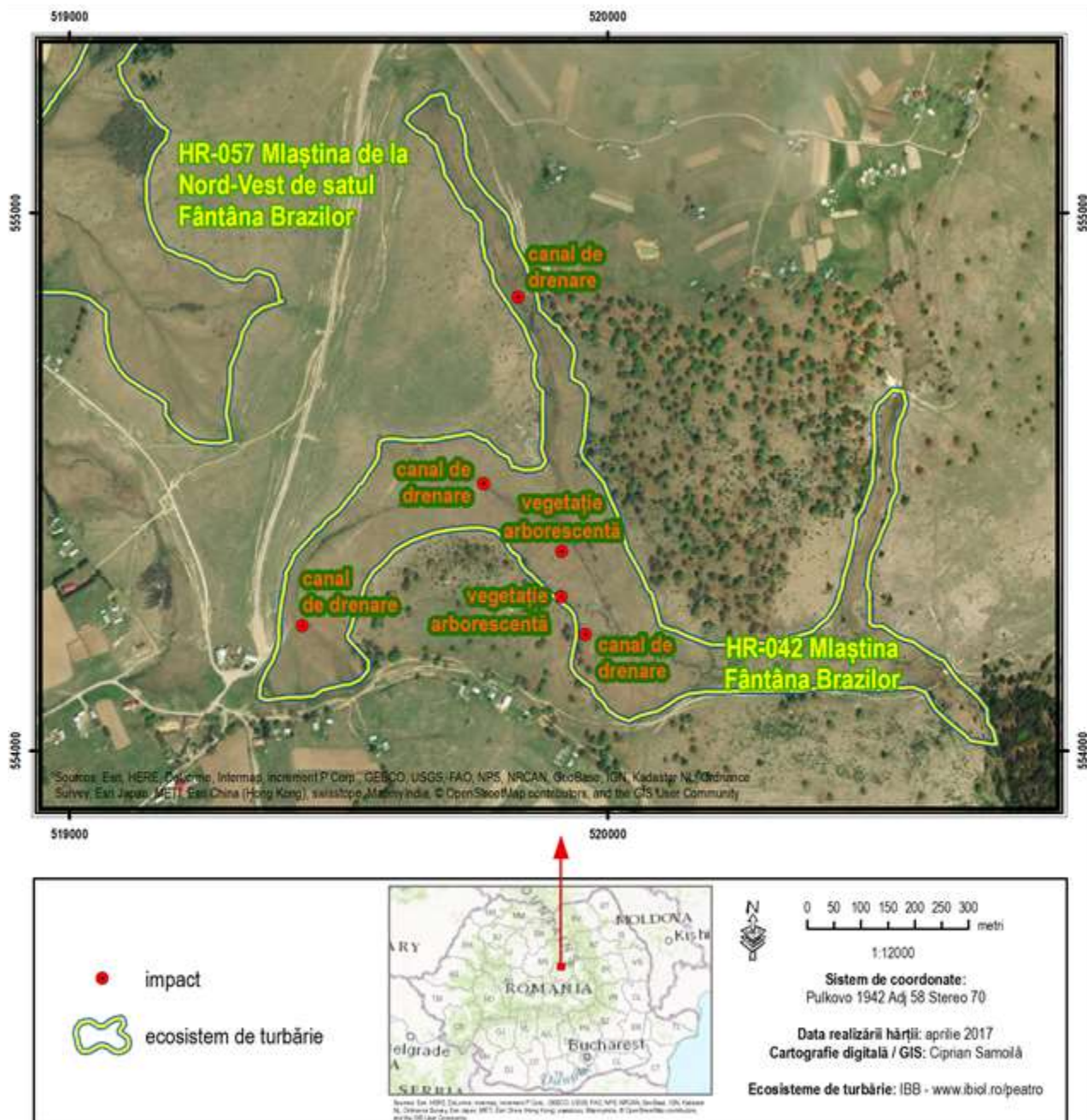
HR-035 – Mlaștina de la Pârâul Rușilor



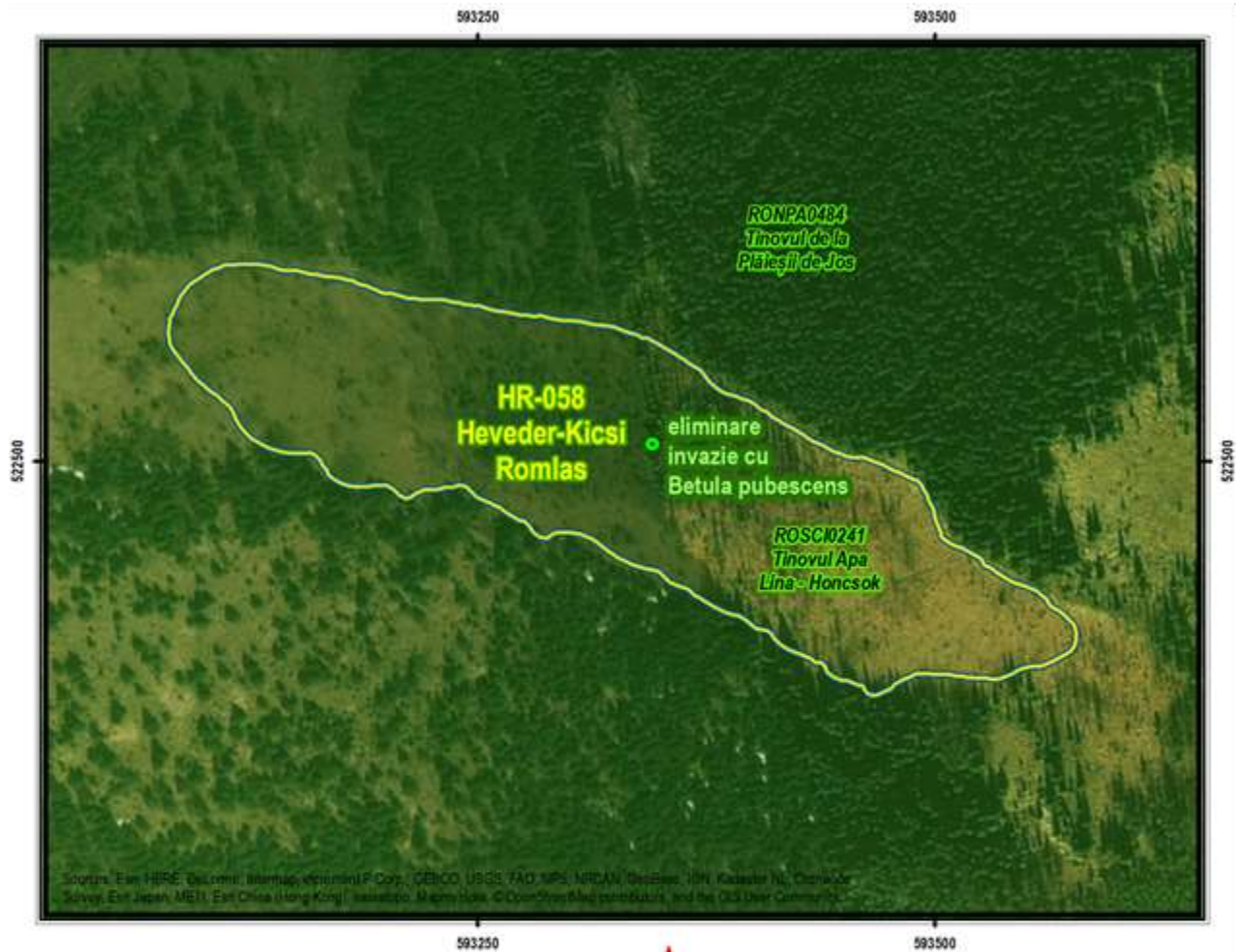
Restoration scheme no. 9

HR-042 – Mlaștina Fântâna Brazilor

HR-057 – Mlaștina de la Nord-Vest de satul Fântâna Brazilor



Restoration scheme no. 10
HR-058 – Heveder-Kicsi Romlas



Sursa: Esri, HERE, DeLorme, Intermap, increment P Corp., GEBCO, USGS, FAO, NPS, NRCAN, Esri, Swisstopo, IGN, Kadaster NL, Ordnance Survey, Esri, Japan, METI, Esri, China (Hong Kong), Swisstopo, Mapbox, © OpenStreetMap contributors, and the GIS User Community

<ul style="list-style-type: none"> măsură ecosistem de turbărie arie naturală protejată 		<p>1:4000</p> <p>Sistem de coordonate: Pulkovo 1942 Adj 58 Stereo 70</p> <p>Data realizării hărții: aprilie 2017 Cartografie digitală / GIS: Ciprian Samoilă</p> <p>Ecosisteme de turbărie: IBB - www.ibb.ro/peatro</p>
---	--	--



Restoration scheme no. 11 HR-072 – Mlaștina Bistricioara



impact

ecosistem de turbărie

0 50 100 metri

1:3000

Sistem de coordonate:
Pulkovo 1942 Adj 58 Stereo 70

Data realizării hărții: aprilie 2017
Cartografie digitală / GIS: Ciprian Samoilă

Ecosisteme de turbărie: IBB - www.ibbiol.ro/peatro